



carmelmarathon.com

RED

Guilford West and East Entrance/Exit to the Arts and Design District and area homes
 Main Street Closed for Carmel Marathon from 6am to 2pm
 1st Ave NE to Guilford
 Main Street Closed for Rock the District from 2pm to 11:59pm
 4th Ave SW to 1st Ave NE
 Drive South (only) on S Guilford Road to Emerson Rd
 A Carmel Police Officer will help direct traffic East and West entrance/exit onto Emerson Road.
Guilford will be south bound only for exiting Emerson

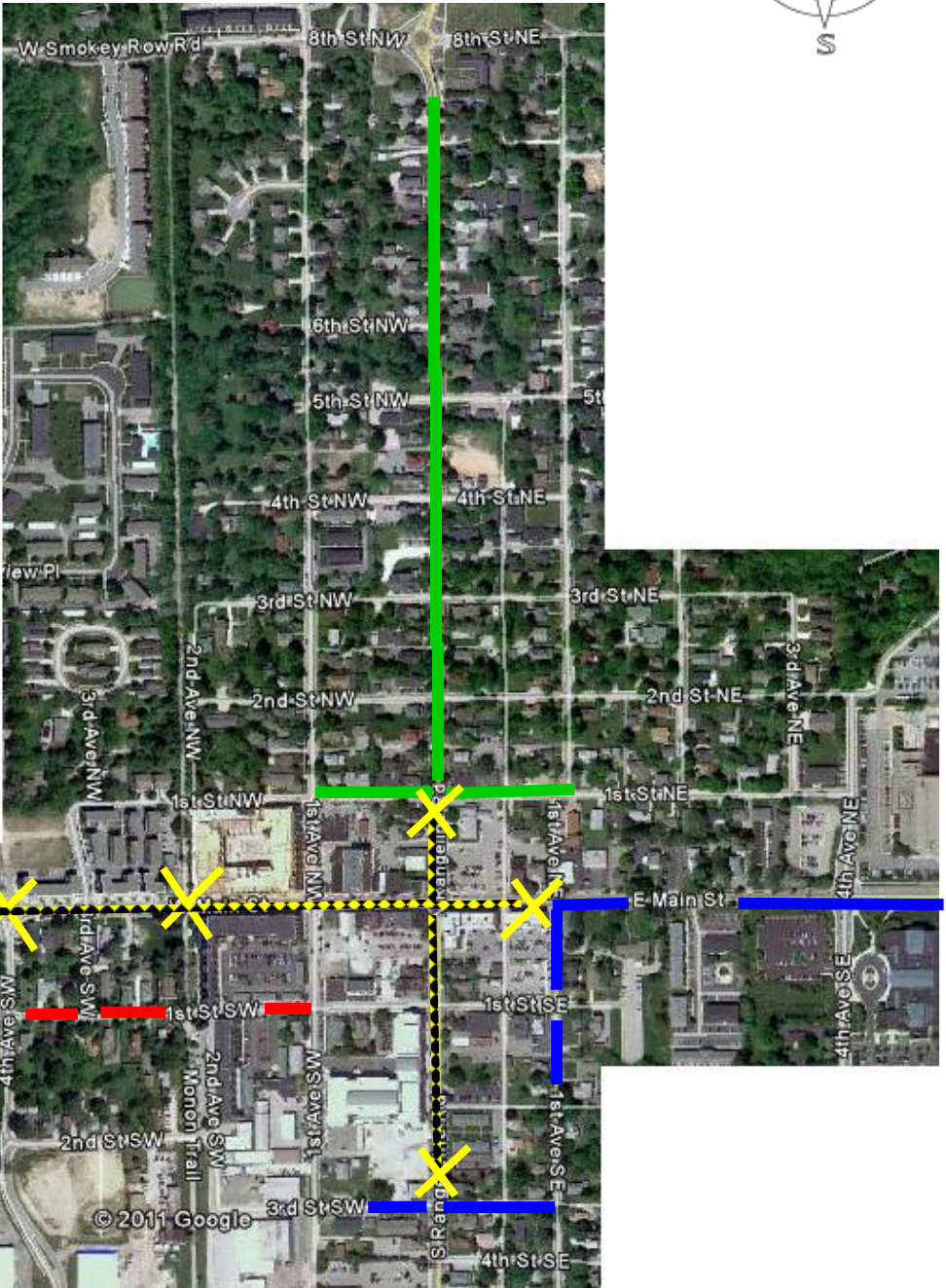
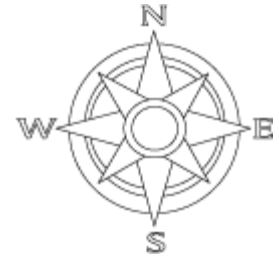
BLUE

3rd St SW East to West Entrance/Exit to the Arts and Design District and area homes
 Main Street Closed for Carmel Marathon from 6am to 2pm
 1st Ave NE to Guilford
 Main Street Closed for Rock the District from 2pm to 11:59pm
 4th Ave SW to 1st Ave NE
 Drive West on E Main Street to 1st Ave NE
 Drive South on 1st Ave SE to 3rd St SW
 A Carmel Police Officer will help direct traffic over S Rangeline Rd
To exit use 3rd St SW to 1st Ave SE to Main Street

GREEN

North to South Entrance to the Arts and Design District and area homes
 Main Street Closed for Carmel Marathon from 6am to 2pm
 1st Ave NE to Guilford
 Main Street Closed for Rock the District from 2pm to 11:59pm
 4th Ave SW to 1st Ave NE/SE
 Rangeline Rd and 1st St NW/NE closed for Carmel Marathon 6am to 2pm & Closed for Rock the District 2pm to 11:59pm
To Enter Rangeline: Drive South on N Rangeline Rd (after 9:30am) OR use 1st Ave NE from Main Street to access 1st St NE/NW
To Exit: Rangeline to 1st St NW/NE and head east to 1st Ave. Access Main Street East to get to Keystone

Carmel Marathon Championship Weekend Arts and Design District Snapshot for Road Closures & Access Plans





carmelmarathon.com

June 11, 2011
Carmel Marathon Championship Weekend
West to East Entrance to the Arts and Design District

Guilford West and East Entrance/Exit to the Arts and Design District and area homes

Main Street Closed for Carmel Marathon from 6am to 2pm
1st Ave NE to Guilford

Main Street Closed for Rock the District from 2pm to 11:59pm
4th Ave SW to 1st Ave NE

Drive South (only) on S Guilford Road to Emerson Rd

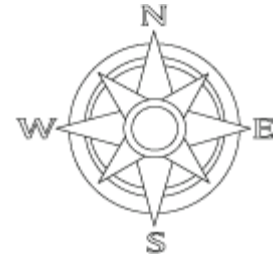
A Carmel Police Officer will help direct traffic East and West entrance/exit onto Emerson Road.

Guilford will be south bound only for exiting Emerson

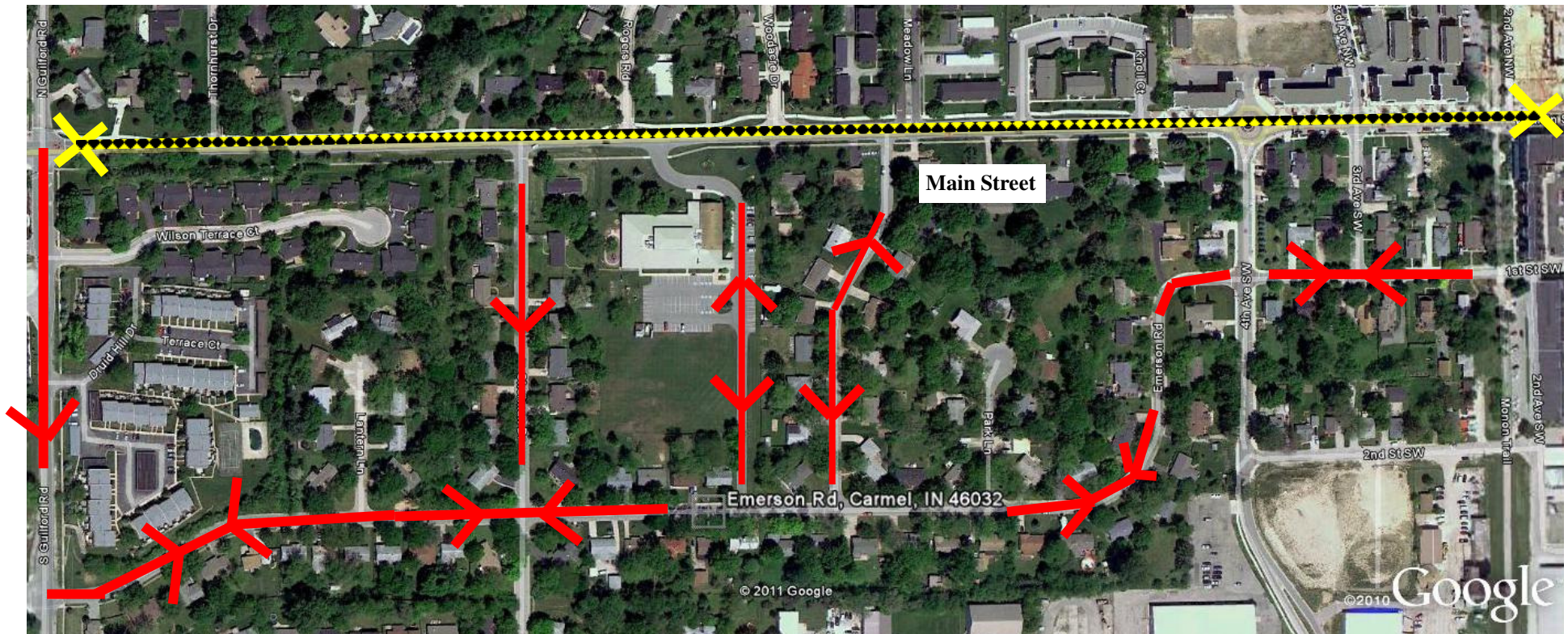
PLEASE FOLLOW CARMEL POLICE OFFICER DIRECTIONS

ANY HOMES NORTH OF MAIN STREET BETWEEN GUILFORD AND 4th AVE SW WILL ACCESS EMERSON DR. VIA SHERMAN DR AND YORK DR FOR EXIT AND ENTRANCE (minimizing your time and delay on main street)

(THORNHURST WILL USE MAIN STREET TO EXIT AND ENTER)



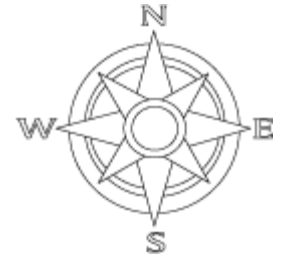
RED





carmelmarathon.com

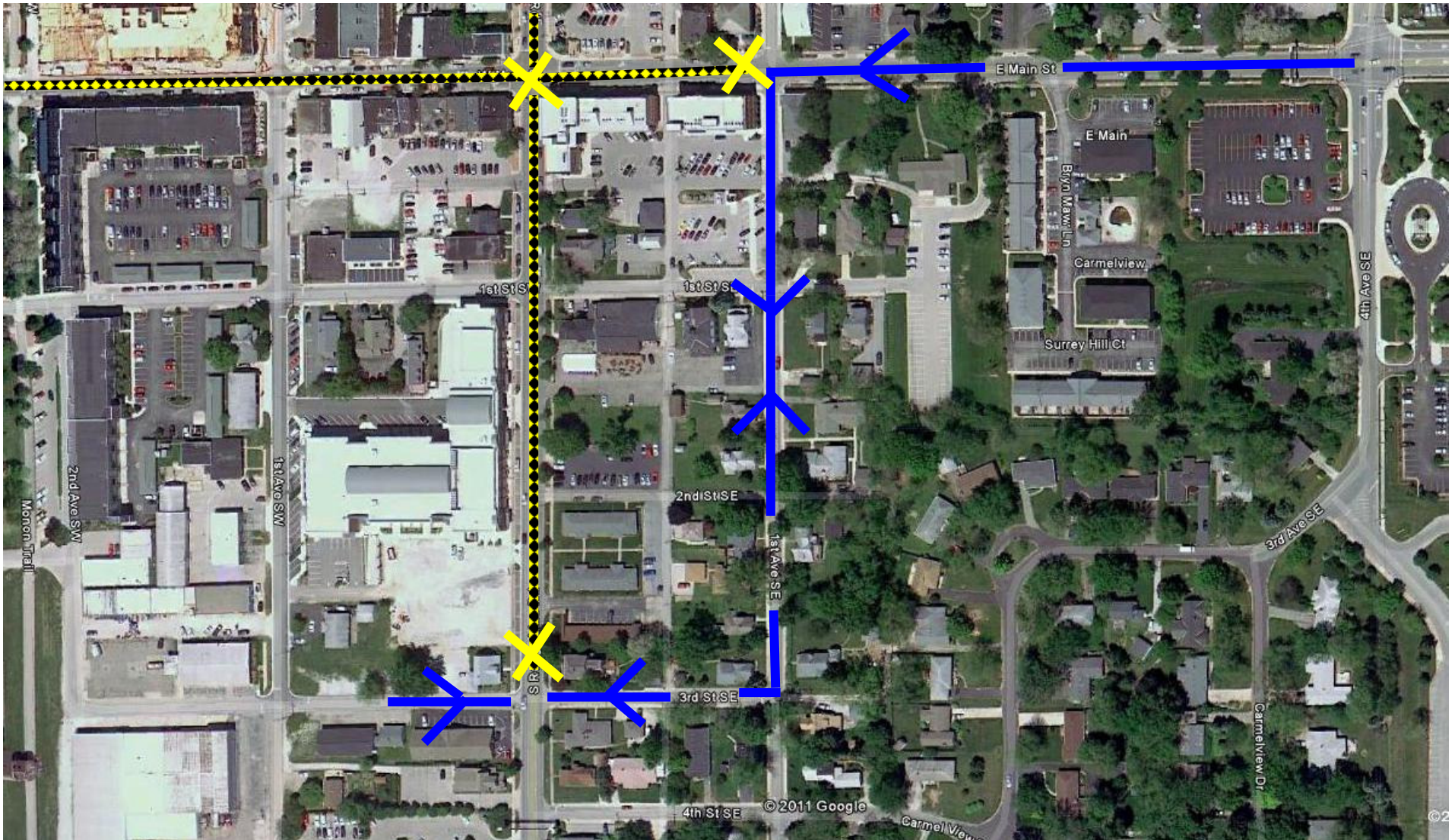
June 11, 2011
Carmel Marathon Championship Weekend
Snapshot Overview of Carmel Arts and Design District



3rd St SW East to West Entrance/Exit to the Arts and Design District and area homes
Main Street Closed for Carmel Marathon from 6am to 2pm
1st Ave NE to Guilford
Main Street Closed for Rock the District from 2pm to 11:59pm
4th Ave SW to 1st Ave NE

BLUE

Drive West on E Main Street to 1st Ave SE
Drive South on 1st Ave SE to 3rd St SW
A Carmel Police Officer will help direct traffic over S Rangeline Rd
To exit use 3rd St SW to 1st Ave SE to Main Street





June 11, 2011
Carmel Marathon Championship Weekend
Snapshot Overview of Carmel Arts and Design District

North to South Entrance to the Arts and Design District
and area homes

Main Street Closed for Carmel Marathon from 6am to 2pm

1st Ave NE to Guilford

Main Street Closed for Rock the District from 2pm to 11:59pm

1st Ave NE to 4th Ave SW

N Rangeline Closed at 1st St NE/NW from 6:00am to 2pm for
the Carmel Marathon

GREEN

Rangeline Closed at 1st St NE/NW from 2pm to 11:59pm for
Rock the District

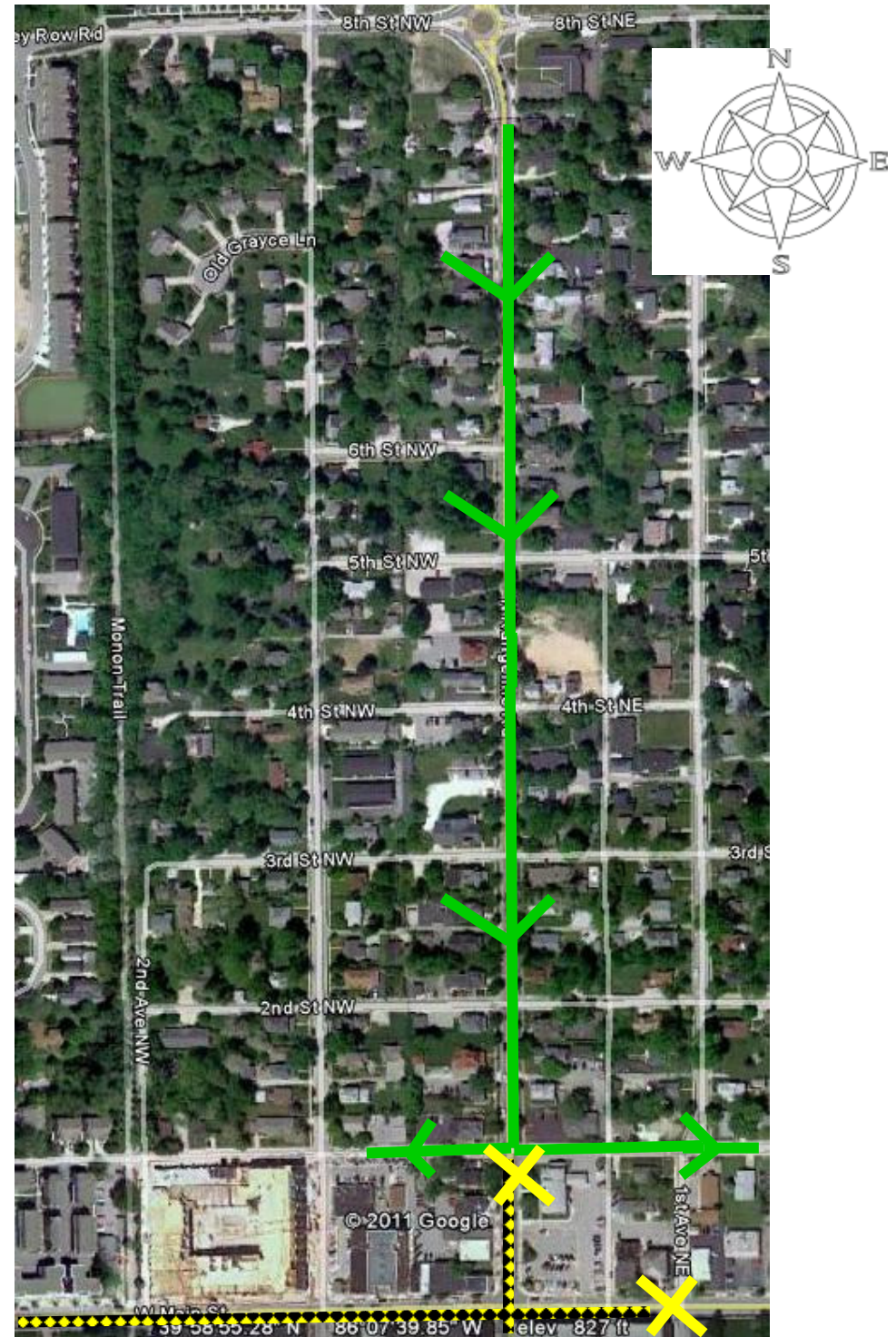
To Enter Area:

Drive South on N Rangeline Rd (after 9:30am) OR use 1st Ave
NE from Main Street to access 1st St NE/NW

To Exit Area:

Rangeline to 1st St NW/NE and head east to 1st Ave. Access
Main Street East to get to Keystone

*9:30am is the first recommended time using Rangeline South
from 136th. Just North of 136th Street on the Hagen Burke
Trail runners/walkers in the full and half marathons will be
crossing N Rangeline Rd until 11:00am. 136th will be used for
the 8k until 9:30am. Please expect delays if this pathway is
used earlier than 9:30am.*



Carmel Marathon Championship Weekend	6-11-11						
Arts and Design District Street Profile							
	Close	Close	Close	Open	Open	Open	
Main Street and Major Intersections	Day	Date	Time	Day	Date	Time	Lane Notes
Main Street and Guilford	Sat	6/11	6am	Sat	6/11	2pm	Guilford Open S Bound only. Main Street E Closed but W Open (Use Emerson)
Main Street and Thornhurst Dr	Sat	6/11	6am	Sat	6/11	2pm	Main St for exit and entrance to local traffic only
Main Street and Sherman Dr	Sat	6/11	6am	Sat	6/11	2pm	Emerson Road for exit and entrance
Main Street and Rogers Rd	Sat	6/11	6am	Sat	6/11	2pm	Main St for exit and entrance to local traffic only
Main Street and Woodacre Drive	Sat	6/11	6am	Sat	6/11	2pm	Emerson Road for exit and entrance
Main Street and York Drive	Sat	6/11	6am	Sat	6/11	2pm	Emerson Road for exit and entrance
Main Street and Meadow Lane	Sat	6/11	6am	Sat	6/11	2pm	York Drive to Emerson Road for exit and entrance for local traffic only
Main Street and Knoll Ct	Sat	6/11	6am	Sat	6/11	2pm	Main St to York Dr to Emerson Rd for exit and entrance to local traffic only
Main Street and 4th Ave SW	Sat	6/11	6am	Sat	6/11	11:59pm	Traffic uses Emerson Rd from the W or 3rd St SW from the E (Rock the District closes at 2pm to 11:59pm)
Main Street and 3rd Ave (NW & SW)	Sat	6/11	6am	Sat	6/11	11:59pm	Traffic uses 1st St NW from Rangeline (Rock the District closes at 2pm to 11:59pm)
							OR Emerson Road from the W (Rock the District closes at 2pm to 11:59pm)
							OR 3rd St SW from the E (Rock the District closes at 2pm to 11:59pm)
Main Street and the Monon Trail	Sat	6/11	6am	Sat	6/11	11:59pm	Main Street Closed E and W (Rock the District closes at 2pm to 11:59pm)
Main Street and 1st Ave (NW & SW)	Sat	6/11	6am	Sat	6/11	11:59pm	Traffic uses 1st St NW from Rangeline (Rock the District closes at 2pm to 11:59pm)
							OR Emerson Road from the W (Rock the District closes at 2pm to 11:59pm)
							OR 3rd St SW from the E (Rock the District closes at 2pm to 11:59pm)
Main Street and Rangeline Road	Sat	6/11		Sat	6/11	11:59pm	Main Street Open E at 1st Ave NE/NW but Closed W (Rock the District closes at 2pm to 11:59pm)
							Rangeline is open N at 1st St NE/NW and S at 3rd St SE/SW (Rock the District closes at 2pm to 11:59pm)
Rangeline Rd and Major Intersections							
Rangeline and Hagen Burke Trail	Sat	6/11	6am	Sat	6/11	11am	Runners/Walkers will be crossing from 7:45 to Noon
Rangeline and 10 St NW				Open			Local Traffic Can Exit and Go North onto Rangeline
Rangeline and 136th Street	Sat	6/11	7am	Sat	6/11	9:30am	136th will be used by the 8k from 8:30 until 9:15
							Rangeline is open North and South after 9:15am
Rangeline and 6th St NW				Open			Take 1st St NE East to 4th Ave NE Then South to Main Street for East
Rangeline and 5th NW				Open			Take 1st St NE East to 4th Ave NE Then South to Main Street for East
Rangeline and 4th St NW				Open			Take 1st St NE East to 4th Ave NE Then South to Main Street for East
Rangeline and 3rd St NW				Open			Take 1st St NE East to 4th Ave NE Then South to Main Street for East
Rangeline and 2nd St NE				Open			Take 1st St NE East to 4th Ave NE Then South to Main Street for East
Rangeline and 1 st NE				Open			Take 1st St NE East to 4th Ave NE Then South to Main Street for East
Rangeline and Main Street	Sat	6/11	6am	Sat	6/11	11:59pm	Rangeline is open N at 1st St NE/NW. Closed S at 3rd St SE/SW (Rock the District closes at 2pm to 11:59pm) Closed S at 1st St SE/SW
							Main Street Open E at 1st Ave NE/NW but Closed W to Guilford (Rock the District closes at 2pm to 11:59pm) Closed only to 4th Ave NE/NW
Rangeline and 1st St SE	Sat	6/11	6am	Sat	6/11	2pm	Rangeline Closed at 1st St SE during Marathon. Open to N at Rangeline and 1st St NE/NW
Rangeline and 3rd St SW	Sat	6/11	6am	Sat	6/11	2pm	Rangeline N Open at 1st St NE/NW but S Closed. 3rd St SW Open for ADD Access